

Appendix C
Site Description

This **Exhibit** forms an integral part of the Agreement for the [Project Name] BESS (“Project”) between Syrcuit Energy Solutions (the “Owner”) and [Contractor Name] (the “Contractor”). The parties intend that terms appearing in initial capital letters, but not otherwise defined herein, have the meaning defined elsewhere in the Agreement.

1.0 Buena Vista BESS Description

1.1 Description

- 1. Buena Vista BESS will be located at 38.853858, -106.139249 near the Buena Vista substation in Chaffee County, Colorado.

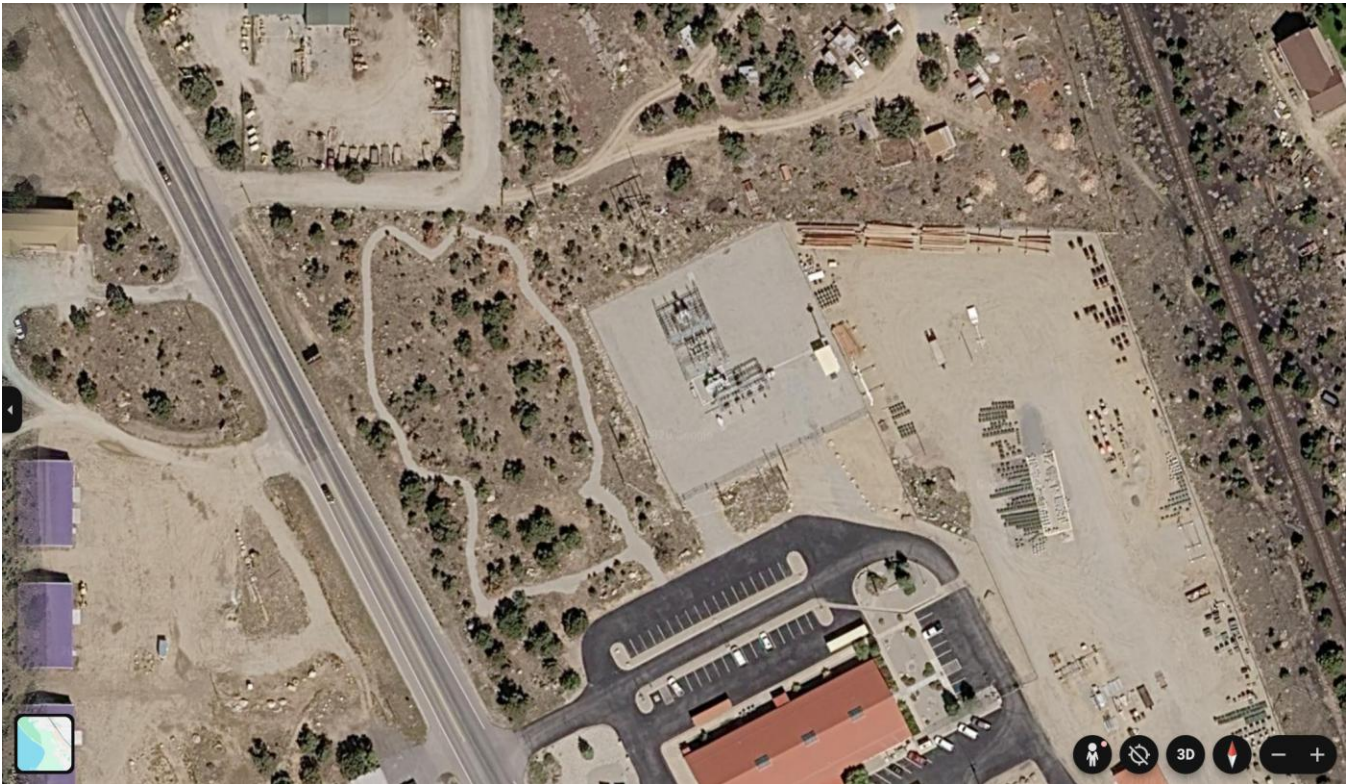


Figure 1 – Project Location KMZ

1.2 Referenced Documents

| # | Document Name | Version |
|---|------------------------------|---------|
| 1 | KMZ Buena Vista 01262026.pdf | 1 |

2.0 Burnt Mill BESS Description

2.1 Description

1. Burnt Mill BESS will be located at 38.12176405, -104.68145097 near the Burnt Mill substation in Pueblo County, Colorado.



Figure 2 – Project Location KMZ

2.2 Referenced Documents

| # | Document Name | Version |
|---|-----------------------------|---------|
| 1 | KMZ Burnt Mill 01262026.pdf | |

3.0 El Moro BESS Description

3.1 Description

- 1. El Moro BESS will be located at 37.22404465, -104.47937851 near the El Moro substation in Las Animas County, Colorado.



Figure 3 – Project Location KMZ

3.2 Referenced Documents

| # | Document Name | Version |
|---|--------------------------|---------|
| 1 | KMZ El Moro 01262026.pdf | 1 |

4.0 Fort Laramie BESS Description

4.1 Description

1. Fort Laramie BESS will be located at 42.138397, -104.557604 near the Fort Laramie substation in Goshen County, Wyoming.



Figure 4 – Project Location KMZ

4.2 Referenced Documents

| # | Document Name | Version |
|---|-----------------------------|---------|
| 1 | KMZ Ft Laramie 01262026.pdf | 1 |

5.0 La Grange BESS Description

5.1 Description

1. La Grange BESS will be located at 41.639497, -104.16958 near the La Grange substation in Goshen County, Wyoming.



Figure 5 – Project Location KMZ

5.2 Referenced Documents

| # | Document Name | Version |
|---|----------------------------|---------|
| 1 | KMZ La Grange 01262026.pdf | |

6.0 Swallows BESS Description

6.1 Description

- 1. Swallows BESS will be located at 38.31657221, -104.83829874 near the Swallows substation in Pueblo County, Colorado.



Figure 6 – Project Location KMZ

6.2 Referenced Documents

| # | Document Name | Version |
|---|---------------------------|---------|
| 1 | KMZ Swallows 01262026.pdf | |